



**the Service Board** · 5290 Rainier Avenue S. Seattle WA 98118

# IMPACT REPORT 2021

# PROGRAM OVERVIEW

In 2021, our community continued to feel the impacts of the ongoing pandemic, with our young people experiencing screen fatigue and social isolation. To address this, programs were delivered using a hybrid model, with both in-person activities and virtual workshops. In-person activities gave youth the opportunity to get outdoors and create new connections to their natural surroundings. In addition to tackling weekly snowboarding lessons, many youth also took their first paddle during our lake clean-up service project. Weekly virtual workshops focused on a range of **social justice topics, such as self-care, racism, the environment, and food justice.** These new experiences were especially important in 2021 and encouraged our youth to push their growing edges.

**TOTAL: 110 HOURS IN COMMUNITY**

From January through May, **Core Program (CP)** gave youth the opportunity to experience:



**50 HOURS OF  
SNOWBOARDING  
TRIPS**



**16 HOURS OF  
SERVICE IN  
THE COMMUNITY**



**32 HOURS OF  
VIRTUAL CORE  
PROGRAM  
WORKSHOPS**



**12 HOURS OF OTHER  
TSB SPONSORED  
ACTIVITIES  
& EVENTS**

From July to August, **Summer Leadership Impact Program (SLIP)** had 12 hours of in-person service projects, including blackberry removal to support salmon habitats, and 12 hours of virtual lessons on environmental topics, such as air pollution.

tSB's motto is **PUSH YOUR GROWING EDGE.** In our 2021 program surveys, we saw a **12.6% increase** in the number of youth who agreed with the statement **"I try things even if I might fail."** This shows us that with the power of a supportive community, youth are more confident and are given the opportunity to fail forward.

**CAELYNE  
ECHOLS**

Prophet, 2021

My experience with tSB was amazing! the tSB community was very welcoming and always made me feel safe. tSB taught me so much about why social justice is so important to create change for our community. Something I learned from tSB that will always stick with me is to push my growing edge because if I hadn't pushed my growing edge, I would've never gone snowboarding.

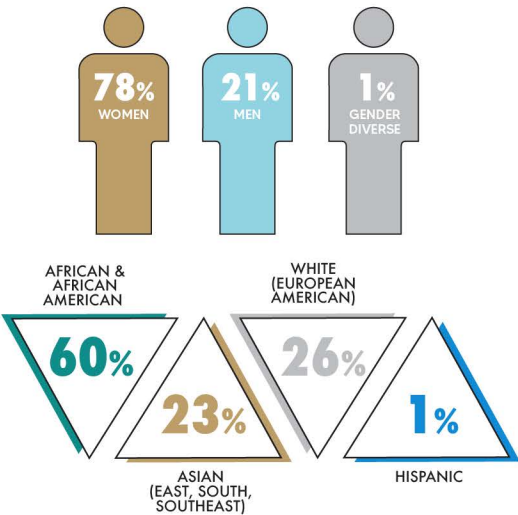
# OUR COMMUNITY

We build a strong community with a two-way mentorship model, where every community member is a mentor to their peers. Studies have shown that informal mentoring decreases unhealthy behaviors, enhances education and employment prospects, and increases the overall mental and physical well-being of youth at a critical point in their development.

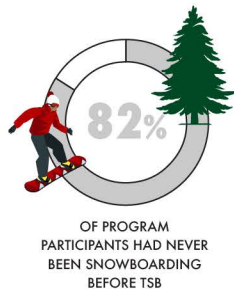
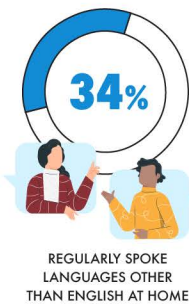
In comparing our 2021 pre-program and post-program survey data, there was a 22% increase in the number of youth who agreed with the statement **“There are people in my community who value me.”**

The number of participants that strongly agreed with the statement **“I feel loved by others”** also increased by 33% during that period.

In 2021 our 30 youth self-identified between 14-18 years old as:



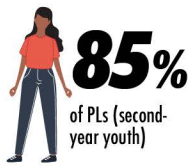
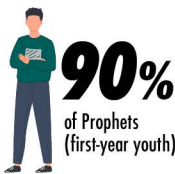
\*MOST INDIVIDUALS SURVEYED IDENTIFY AS MORE THAN ONE RACE



## KING COUNTY



### Retention Numbers:





## Increased Capacity

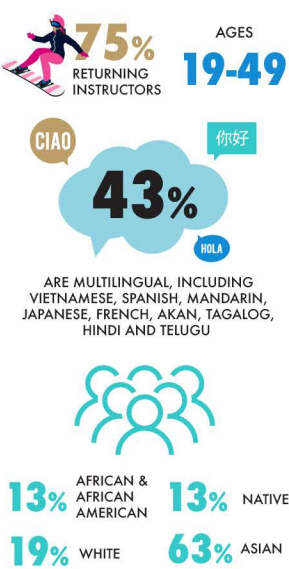
Due to tSB's continued growth, the organization increased capacity by implementing three new positions: Director of Programs, Director of Development & Communications, and Communications Manager. These new positions provide increased capacity for the organization while providing staff more support in their roles.

# MENTORS & SNOWBOARD INSTRUCTORS

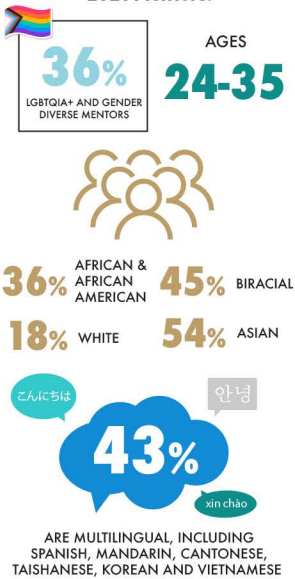
### 2011 Overall Adult Volunteers:



### 2021 Snowboard Instructors:

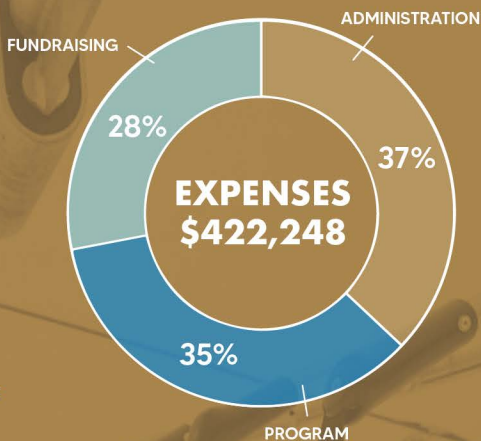
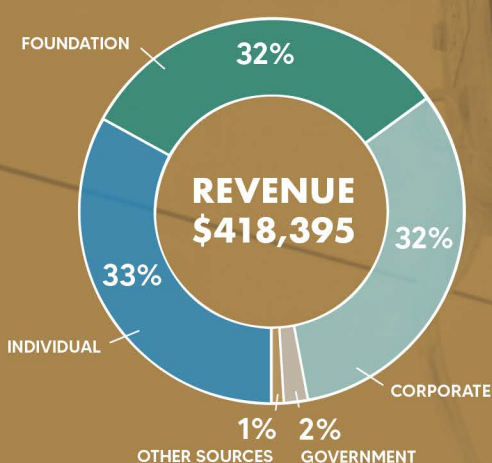


### 2021 Mentors:



I've been snowboarding for more than 25 years now and I've had the privilege of experiencing the intense joys that steep powder lines can bring. But as a person from a traditionally marginalized community, I've never felt fully seen in these spaces. I am proud of the youth in tSB, as they've invested in themselves [in] bringing their FULL selves to this space as they see fit. I don't know about y'all, but who's ready to ride?!"

**MIKE MANUEL**  
Snowboard Instructor 2021



## DONORS

Thanks to our generous donors, we were able to raise **over \$400,000** and secure funding for multiple years. tSB also received national exposure through our expansive community.

### National Exposure



pledges \$10 million over 10 years to women and BIPOC-led nonprofits that focus on breaking down barriers to the outdoors for underrepresented communities



continues their support for tSB through the production and profit sharing of the Essential Service Board

## 2020 MAJOR FUNDING PARTNERS

### \$25,000 and above

The Satterberg Foundation  
Share Winter Foundation  
Ariel Foundation  
evo

### \$10,000 - \$24,999

Patagonia  
Lib Tech and GNU  
King County Executive Services

### \$5,000 - \$9,999

Henry M. Jackson Foundation  
Justin Dechant  
Perkins Coie

### \$1,000 - \$4,999

Dana and Michael Guy  
Microsoft  
Anne Cleary

Meghan Stevenson  
Jerron Marshall  
David Schulman  
Nick Timchalk  
Group Health  
Foundation  
Ira and Courtney  
Gerlich  
Todd Wilson  
Josh Ayala  
Wonderland  
Gear Exchange  
Kwaku Sefa-Dedeh  
Niki Yoshiucky  
Sonny Nguyen  
Dana Guy  
Erin White  
Maria Ariens  
Darrell Sanders  
Marcus Delgado

Philip Heller  
and Gail Peterson  
Andrew Perez  
Maria Valencia  
and Nathan Hanes  
Cecilia Deng  
Derek Harris  
La Rond Baker  
Coleman  
Ekata Inc  
Nick Timchalk and  
Kristina Markosova  
Phil and Jen Gousman  
Emily Chen  
Starbucks Foundation  
Wilderness Arch  
Perry Allan and  
Katherine Jones West

# COMMUNITY PARTNERS

The tSB community extends far beyond our doors. As a community-based organization, we put a strong emphasis on supporting and working with other local community organizations. Our community partners help us run our programs, promote our mission, and make it possible to access the outdoors.

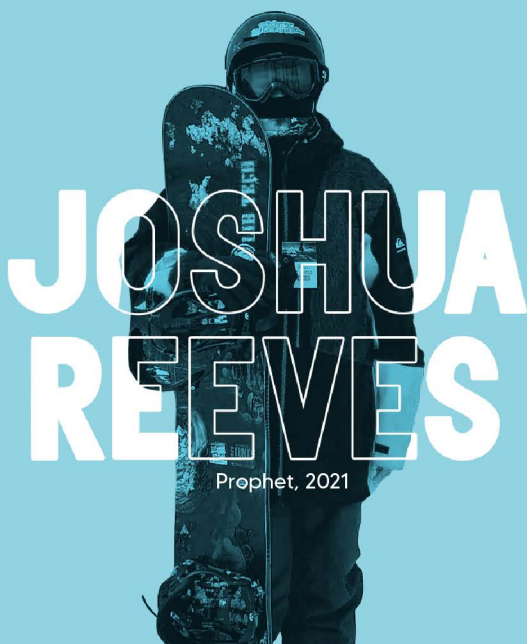
Alaska Airlines  
Black Star Farmers  
Collective  
CAPiTA Snowboards  
Coal Headwear  
College Money Habits  
Crystal Mountain Resort  
DC Shoes  
Die Cut Stickers  
evo  
Environmental Science  
Center - City of Burien  
GoodFoot Arts Collective  
Heritage Distilling Co.  
High Cascade  
Snowboarding Camp  
Kat Young Designs

King County Metro  
- Trailhead Direct  
Lib Tech & GNU  
Low-Pressure Studio  
Mountain to Sound  
Greenway Trust  
Patagonia  
POLAR Beverages  
People's Harm Reduction  
Alliance (PHRA)  
Penguin Productions  
Potential Unleashed  
Consulting LLC.  
Puget Sound Clean  
Air Agency  
Refuge Outdoor Festival  
REI  
RIDE Snowboards

Skate Like A Girl  
Seirus Innovation  
Starline Luxury Coaches  
Sound Discipline  
School's Out  
Washington (SOWA)  
The Summit at Snoqualmie  
TransFamilies  
Umami Kushi  
Union Binding Co.  
Vail Resorts - Stevens Pass  
Washington Trails  
Association (WTA)  
Washington Technology  
Industry Association  
The Wilderness Society  
Wonderland Gear Exchange  
Youth In Focus

## In 2021 tSB:

- Partnered with **Coleman, Wonderland Gear Exchange** and **Crystal Mountain Resort** to provide lift tickets and high quality gear to our participants
- Executed all major fundraising events with the support of **Blanton Turner, Bale Breaker Brewing** and **Heritage Distilling Co.**
- Launched our first summer snowboarding camp scholarship, in collaboration with **CAPiTA Snowboarding** and **High Cascade Camp**



Prophet, 2021

One of the biggest reasons I wanted to [attend camp] was because...I am not able to pay for lift tickets and transportation. Being able to snowboard for free was almost unbelievable for me. The highlight of my trip was learning double frontflips. It was really cool because everyone was cheering me on.